

ROOF PLAN 1:100

METAL ROOF

- ALL TIMBER BEAMS TO BE LVL E-BEAM
- TD - R10 ROD FIX TO ROOF BEAM AND 200SQ10PL BASE PLATE ANCHORED INTO BRICKWORK 12c MIN BELOW BEAM. OR FULLY WELD TO LINTEL.
- FOR ROOF NOTES REFER TO COVER SHEET
- COLUMN SHOWN AS UNDER UNLESS NOTED OTHERWISE.

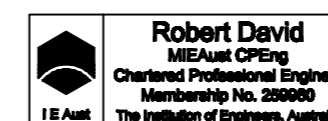
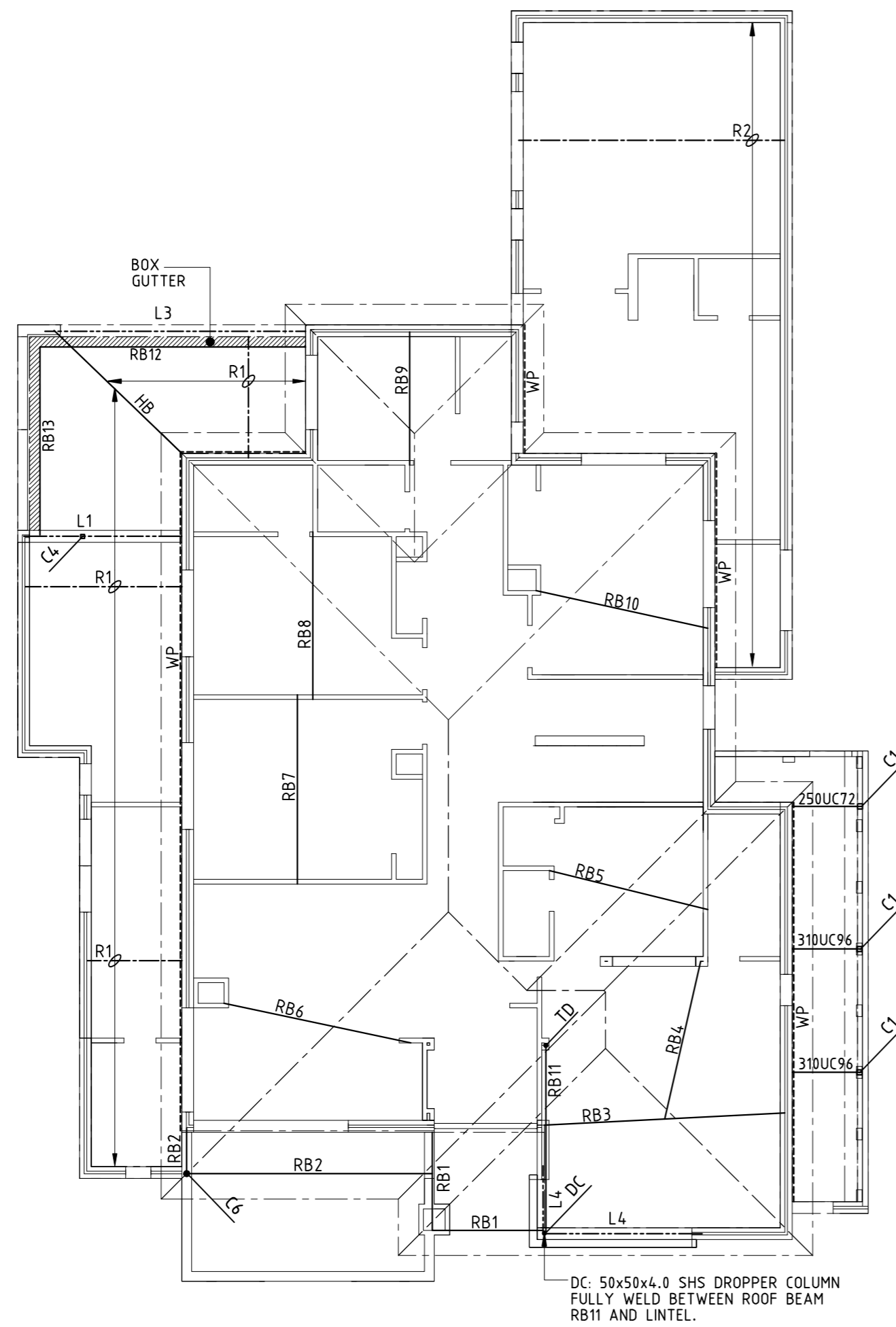
TYPICAL BEAM CONNECTION NOTE:

- A) TIMBER TO TIMBER BEAM CONNECTION - PROVIDE EX8PL ANGLE CLEAT AND FIX TO EACH BEAM VIA 2M12BOLTS
- B) STEEL TO TIMBER BEAM CONNECTION - WELD EX10PL CLEAT TO STEEL BEAM AND FIX TO INTERSECTING BEAM VIA 2M12BOLTS.
- C) STEEL TO STEEL BEAM CONNECTION - WELD EX10PL CLEAT TO STEEL BEAM AND FIX TO INTERSECTING BEAM VIA 2M16BOLTS.

MEMBER SCHEDULE

RB1	170x63 LVL
RB2	240x63 LVL
RB3	300x63 LVL
RB4	170x63 LVL
RB5	170x63 LVL
RB6	200x63 LVL
RB7	200x63 LVL
RB8	170x63 LVL
RB9	170x63 LVL
RB10	170x63 LVL
RB11	150UB14
RB12	300x63 LVL
RB13	300x63 LVL
R1	120x45 MGP10 RAFTERS @ 600c/c MAX.
R2	240x35 MGP10 RAFTERS @ 600c/c MAX.
WP	WP - 190 x 45 MGP10 WALL PLATE. FIX TO WALL WITH M10 MASONRY ANCHORS AT 600 c/c MAX (100mm FROM END).
HB	240x35 HIP RAFTER

CONVENTIONAL ROOF FRAMING AND ROOF ANCHORAGE TO BE IN ACCORDANCE WITH BCA & AS 1684-SAA LIGHT TIMBER FRAMING CODE. (TYPICAL)



632 NEWCASTLE STREET, LEEDERVILLE, WA 6007.
T. 08 9228 4644, F. 08 9328 2937 www.abewa.com.au

DRAWING TITLE
ROOF PLAN

PROJECT		APPROVED BY:		SHEET
DRAWN				S8
DESIGNED				REV
CHECKED		SCALE: 1:100		-