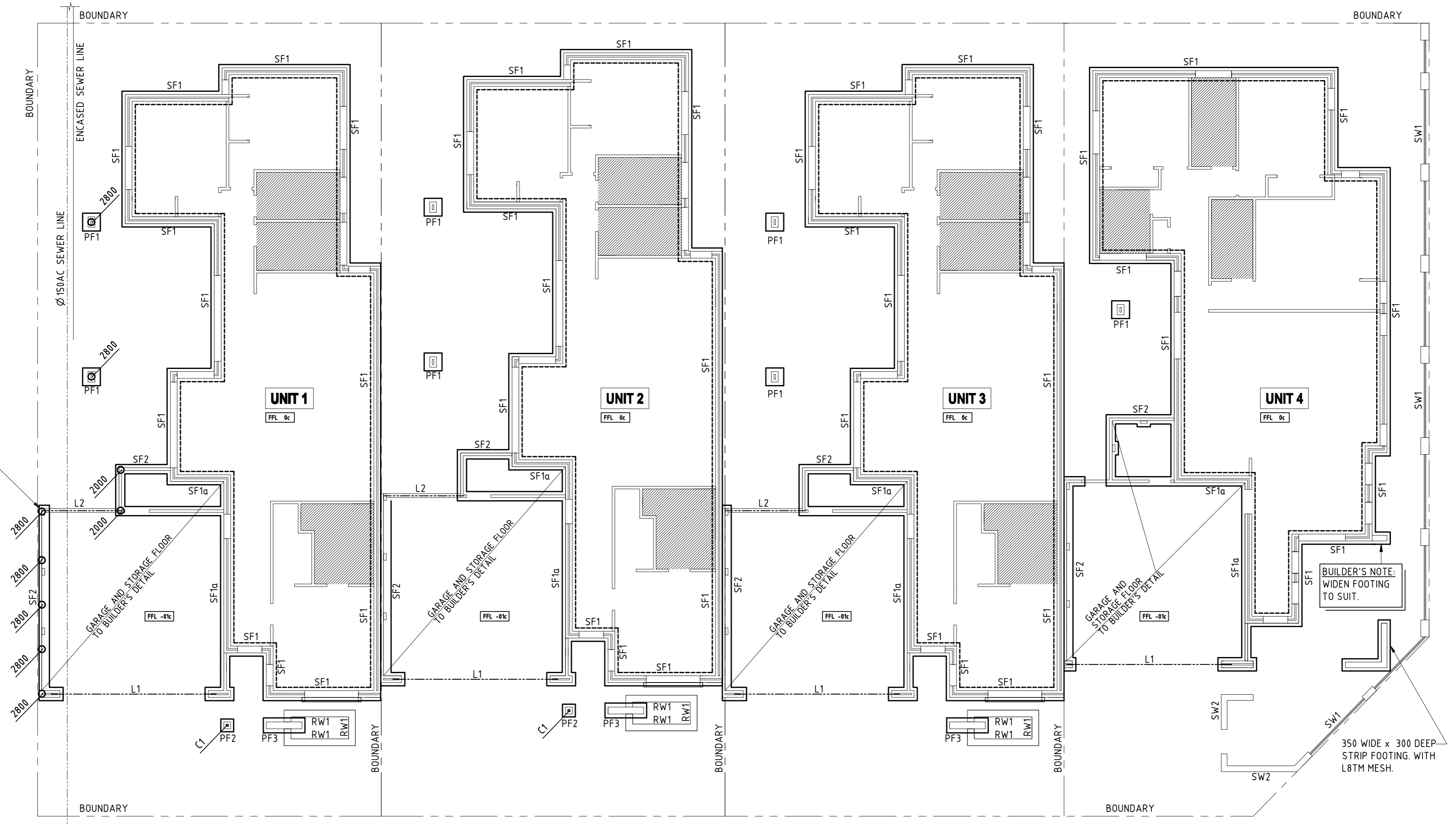
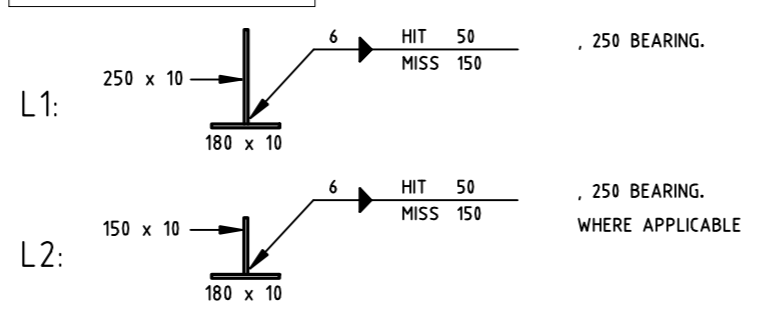


PILES @ 1500 c/c MAX.
PILE LENGTH AS MARKED.
REFER TO PILE DETAIL.



LINTEL SCHEDULE 1:20



- INSTALL 2 L6 GALV. RODS IN FIRST TWO BED JOINTS OF EACH LEAF OF BRICKWORK ABOVE LINTEL (LAP 500 WHERE REQ'D) 20 SIDE COVER)
- 200 x 10 PL AT 230 WALL.
- INTERSECTING LINTELS TO BE MITRE CUT AND FULLY WELDED AT CORNER

FOOTING & GROUND SLAB PLAN 1:100

- PROVIDE 100mm GROUND SLAB REINFORCED WITH SL62 FABRIC, 25mm TOP COVER U.N.O. LAP 225mm MIN. WHERE REQUIRED.
- WET AREAS SET DOWN 40mm FOR TILING AND FALLS, MAINTAIN 100mm SLAB THICKNESS. (SHOWN HATCHED) CRANK MESH 1 : 6 OR LAP 225mm MIN
- PROVIDE 2-N16 x 1500 LONG RE-ENTRANT BAR TIED UNDER MESH AT ALL RE-ENTRANT CORNERS.
- PF1 - 600 x 600 x 300 DEEP, UNREINFORCED
PF2 - 500 x 500 x 300 DEEP, UNREINFORCED
PF3 - 1400 x 500 x 300 DEEP, UNREINFORCED
- C1 - 65 x 65 x 2.0 SHS (SEE COLUMN C1 DETAIL ON SHEET S2)

| | | | |
|--|----------|--------------|-------------|
| <p>ADVANCED BUILDING ENGINEERS PTY LTD ABN 63 128 473 832 ACH 128 473 832 632 NEWCASTLE STREET, LEEDERVILLE, WA 6007. T. 08 9228 4644, F. 08 9328 2937 www.abewa.com.au</p> | PROJECT | | SHEET S1 |
| | DRAWN | APPROVED BY: | |
| DRAWING TITLE FOOTING & GROUND SLAB PLAN | DESIGNED | SCALE: 1:100 | REV |
| CHECKED | | | |

Robert David
MEMBER OF THE
Chartered Professional Engineer
Membership No. 259980
The Institution of Engineers, Australia