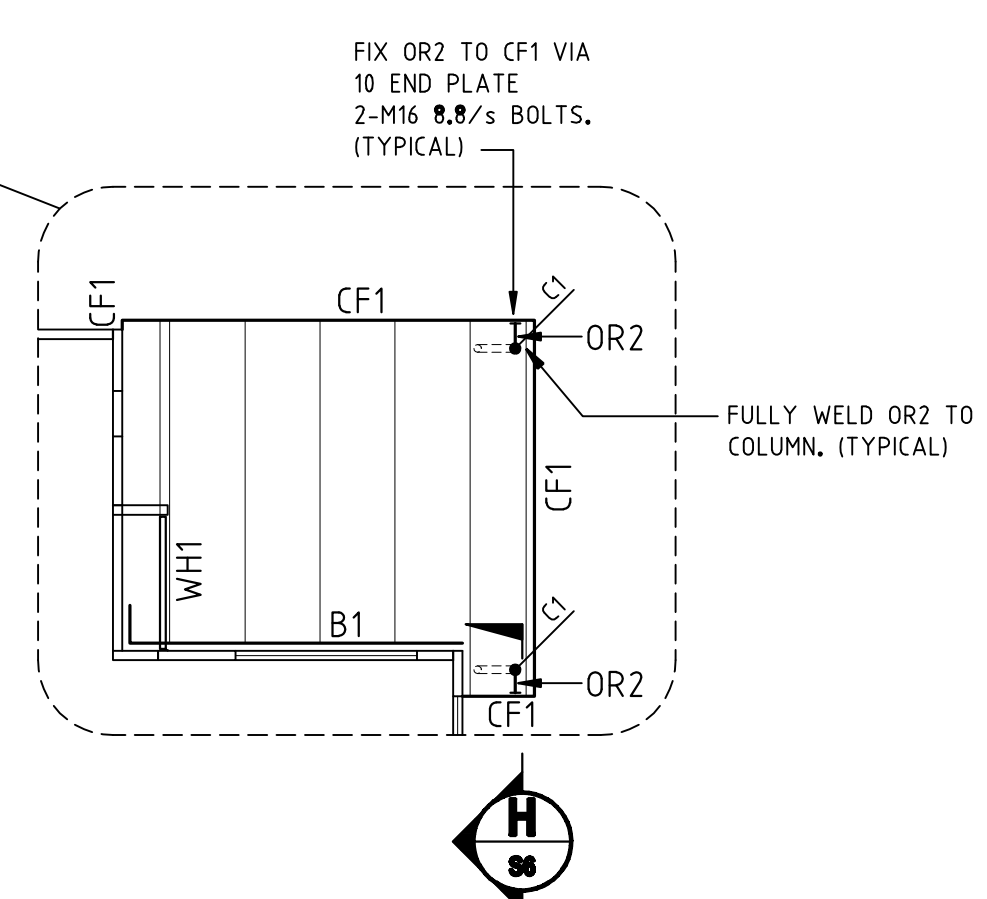
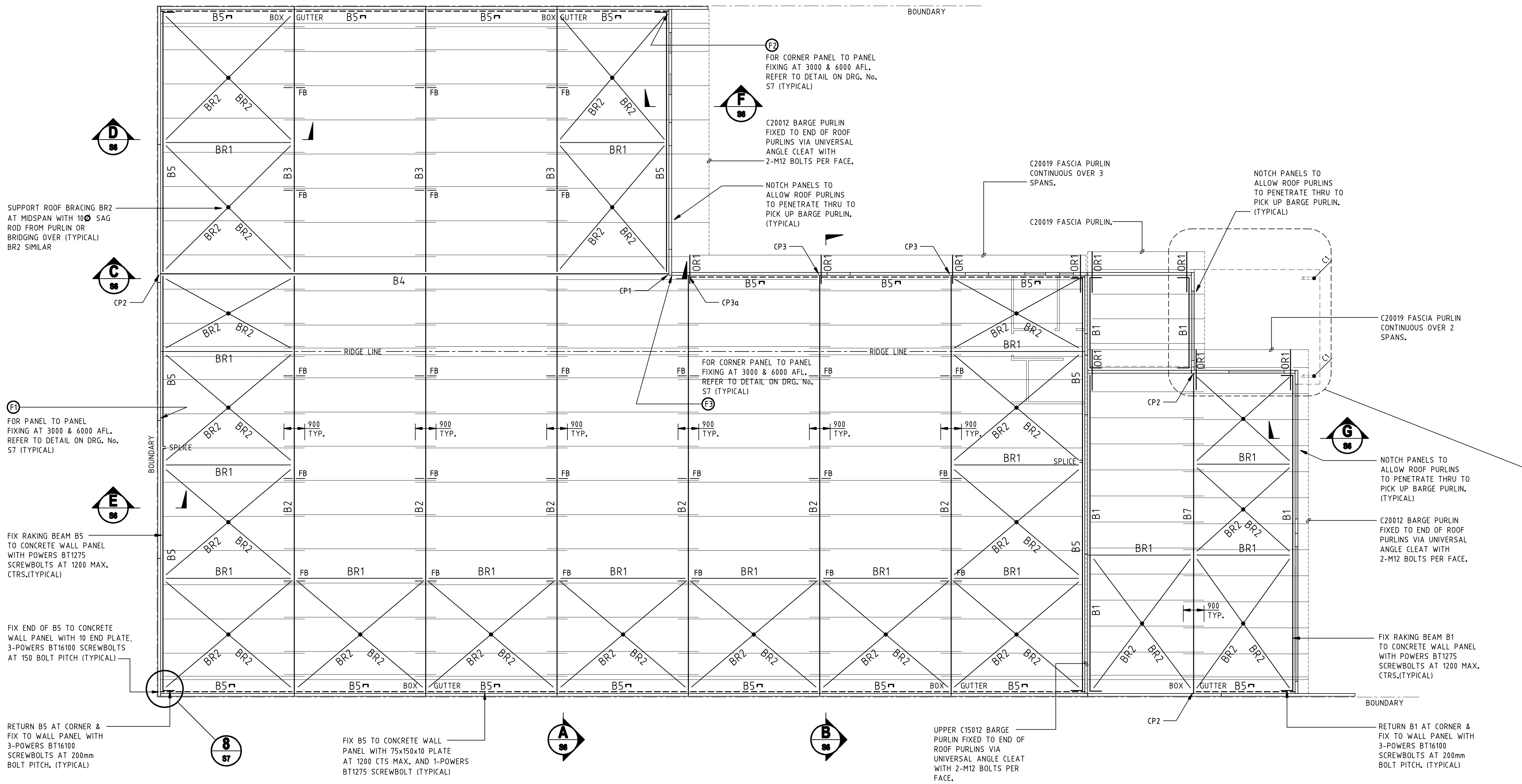


- STEELWORK NOTES:**
- FABRICATE AND ERECT STEELWORK IN ACCORDANCE WITH A.S.400-1999 STEEL STRUCTURES CODE.
 - VERIFY ALL SETOUT DIMENSIONS WITH ARCHITECTURAL DRAWINGS. DO NOT SCALE FROM STRUCTURAL DRAWINGS.
 - SHOP DRAWINGS SHALL BE SUBMITTED AND APPROVED BY THE ENGINEER AS COMPLYING WITH THE DESIGN DOCUMENTS BEFORE COMMENCING FABRICATION.
 - PROVIDE ALL CLEATS, BRACKETS, WELDING AND HOLES NECESSARY FOR THE COMPLETION OF THE BUILDING AND AS SHOWN AND REQUIRED TO SUIT ARCHITECTURAL DETAILS.
 - FULLY SEAL ALL HOLLOW SECTIONS USING 5mm PLATES UNLESS NOTED OTHERWISE.
 - ALL NATURAL CAMBERS IN STEELWORK TO BE UPWARDS.
 - MEMBERS SHALL BE IN ONE LENGTH, UNLESS OTHERWISE APPROVED.
 - ENGINEER TO APPROVE ALTERNATIVE DETAILS BEFORE FABRICATION.
 - ERECTOR OF STEELWORK SHALL BE COMMENCED WITH BRACED BAYS AND ERECTOR SHALL PROVIDE ALL TEMPORARY BRACING REQUIRED FOR THE SAFE COMPLETION OF THE WORK.
 - ALL COLD FORMED STEEL MEMBERS, CONNECTIONS, BRACING ETC. SHALL CONFORM WITH A.S.1538 AND THE MANUFACTURER'S WRITTEN INSTRUCTIONS.
 - ALL SUSPENSION FIXINGS TO ROOF PURLINS SHALL BE TO THE PURLIN WEB ONLY, UNLESS NOTED OTHERWISE.
 - WELDED CONNECTIONS SHALL DEVELOP THE FULL STRENGTH OF THE MEMBERS JOINED. MINIMUM WELD TO BE 6mm CONTINUOUS FILLET UNLESS NOTED OTHERWISE.
 - MINIMUM BOLTED CONNECTION SHALL BE:
 - 10mm CLEAT, FIN AND END PLATES.
 - 2 No. M16 GRADE 4.6/5 BOLTS.
 - ALL HIGH STRENGTH BOLTS TO BE GRADE 8.8/9 IN ACCORDANCE WITH A.S.510.
 - PACK UNDER ALL BASEPLATES WITH 12 CEMENT/SAND GROUT.
 - ALL BOLTS, NUTS AND WASHERS TO BE CADMIUM PLATED. ALL H.D. BOLTS, NUTS AND WASHERS TO BE HOT DIPPED GALVANISED UNLESS NOTED OTHERWISE.
 - MINIMUM STEELWORK FINISHES SHALL BE:
 - BLAST CLEAN TO CLASS 2.5.
 - 75 MICRONS OF INORGANIC ZINC SILICATE.
 - STEELWORK BELOW GROUND TO HAVE AN EXTRA 2 COATS OF COAL TAR EPOXY.
 - ALL STEEL COLUMNS ADJACENT TO MASONRY TO HAVE ONE R6.3 ROD EACH SIDE, CRIMPED AND WELDED 25mm TO COLUMN AT 400mm CRS VERTICALLY. WIRE TIE COLUMN TO BRICKWORK AT 400mm CRS VERTICALLY.



LOWER ROOF STEELWORK PLAN 1:100

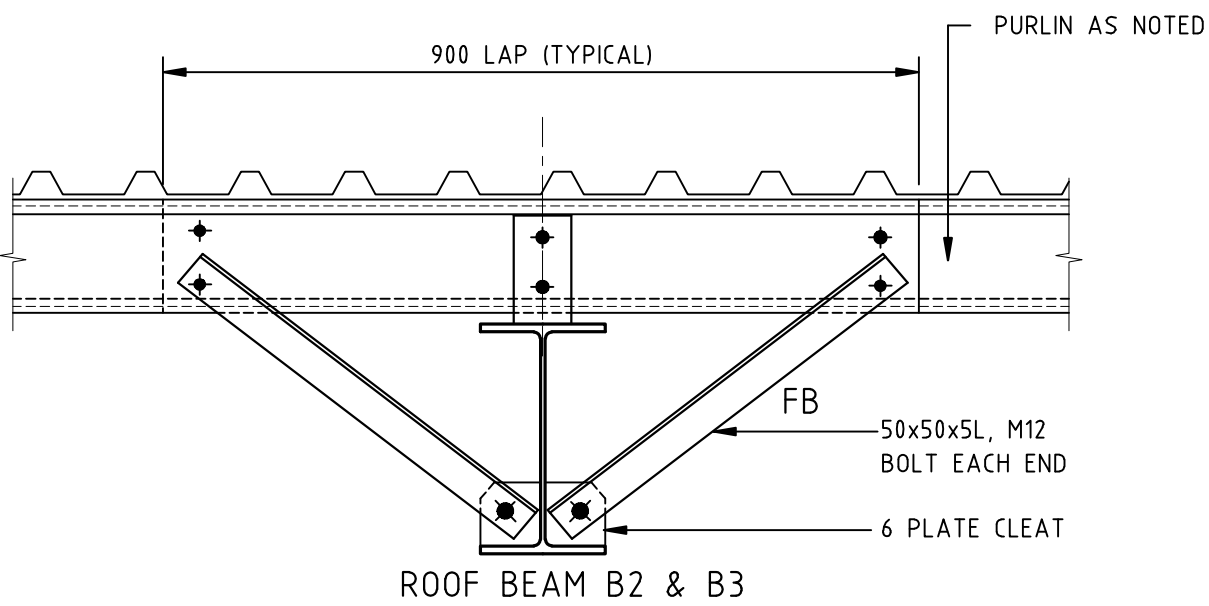
LOWER PORTICO ROOF PURLINS
 ALL ROOF PURLINS TO BE Z15015 U.N.O. BRIDGING AT MIDSPAN TO MANUFACTURERS SPECIFICATION. LAP AT SUPPORTS AS SHOWN. 1000 END SPACING & 1200 INTERNAL SPACING (BRIDGING NOT SHOWN FOR CLARITY)

ROOF STEELWORK PLAN 1:100

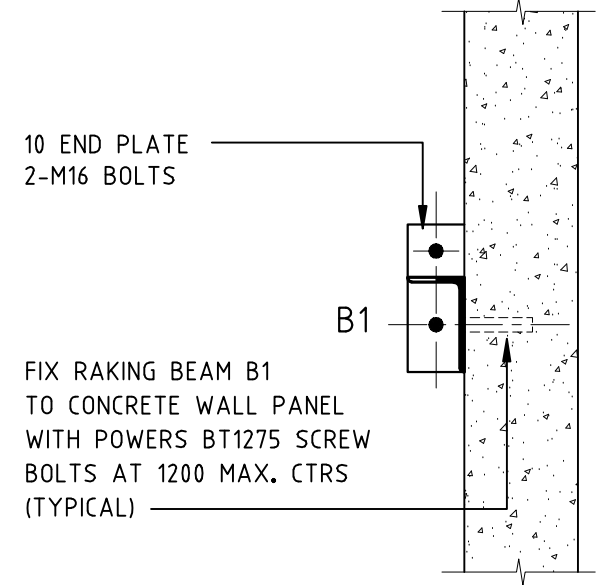
- OFFICE ROOF PURLINS**
 ALL ROOF PURLINS TO BE Z15015 U.N.O. BRIDGING AT MIDSPAN TO MANUFACTURERS SPECIFICATION. LAP AT SUPPORTS AS SHOWN. 1000 END SPACING & 1200 INTERNAL SPACING (BRIDGING NOT SHOWN FOR CLARITY)
- WORKSHOP ROOF PURLINS**
 ALL ROOF PURLINS TO BE Z15015 U.N.O. BRIDGING AT MIDSPAN TO MANUFACTURERS SPECIFICATION. LAP AT SUPPORTS AS SHOWN. 1000 END SPACING & 1700 INTERNAL SPACING (BRIDGING NOT SHOWN FOR CLARITY)
- HOT DIP GALVANISE ALL EXPOSED STEELWORK
- BRACING CONNECTIONS**
 BR1 - 2-M16 8.8/9 BOLTS
 BR2 - 2-M16 8.8/9 BOLTS
 BR3 - 1-M20 8.8/9 BOLT

MEMBER SCHEDULE

B1	125 x 75 x 8 L
B2	460 UB 67 - 30mm CAMBER (UPWARD)
B3	310 UB 32 - 15mm CAMBER (UPWARD)
B4	610 UB 125 - 30mm CAMBER (UPWARD)
B5	200 x 75 PFC
B6	180 x 75 PFC
B7	360 UB 44 - 30mm CAMBER (UPWARD)
CF1	200 x 75 PFC
OR1	125 x 65 PFC
OR2	180 x 75 PFC
BR1	88.9Ø x 3.2 CHS - (C350)
BR2	75 x 75 x 6 L
C1	139Ø x 3.5 CHS

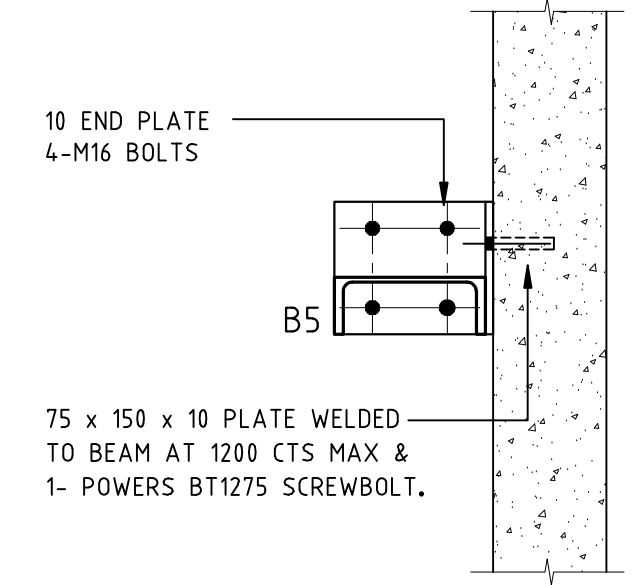


FB - FLY BRACE DETAIL 1:10



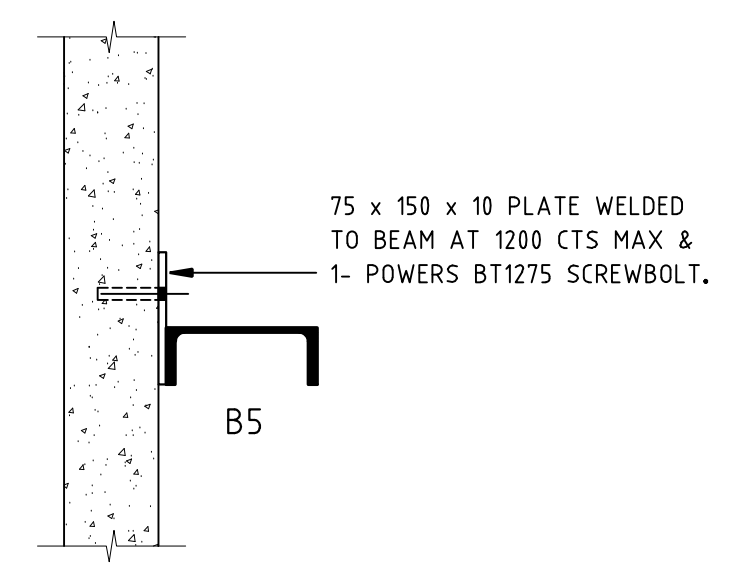
SPLICE DETAIL - B1

BEAM B1 SPLICE TO BE LOCATED AT A MINIMUM OF 1000mm EITHER SIDE OF PANEL JOINT

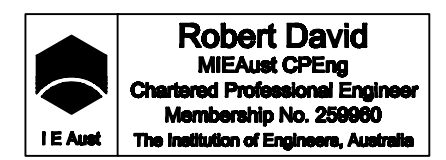


SPLICE DETAIL - B5

BEAM B5 SPLICE TO BE LOCATED AT A MINIMUM OF 1000mm EITHER SIDE OF PANEL JOINT



TYPICAL B5 FIXING DETAIL 1:10



ADVANCED BUILDING ENGINEERS PTY LTD
 632 NEWCASTLE STREET, LEEDERVILLE, WA 6007.
 T. 08 9228 4644, F. 08 9328 2937 www.abewa.com.au

DRAWING TITLE		APPROVED BY:		SHEET S5	
ROOF STEELWORK PLAN AND DETAILS					REV 2
DRAWN	DESIGNED	SCALE: 1:100	CHECKED		